



Key Features

- Airwave software to check monitoring remotely
- Multiple 'simulated' dosimeters
- Simple operation
- Rugged design
- Long battery life
- Full colour display
- 1 second time history profiling
- Motion sensing
- Pause function
- Measures all noise dose parameters simultaneously
- Audio recording for voice notes and level triggered events

Applications

- Complete shift exposure measurements
- Task based measurements
- Selection of hearing protection

The dBadge2 is the next generation in personal noise dosimeters, offering features only previously available in the most advanced of hand held sound level meters. The dBadge2 personal noise dosimeter is the ideal tool for a variety of workplace noise assessments and campaigns with the added benefit of Bluetooth® Connectivity meaning you can connect the dBadge2 to your smartphone or mobile device. Now with Intrinsically Safe versions, the dBadge2 is the perfect tool for personal noise assessment, whichever industry or environment you work in.

Head Office:

Unit 1 / 3 Deakin Street
(PO Box 5904)
Brendale QLD 4500 Australia
Ph: +61 (0) 7 3481 9000

Perth Office:

Unit 5 / 30 Enterprise Crescent
Malaga WA 6090 Australia
Ph: +61 (0) 8 6184 7840
sales@controequipment.com.au

Representatives/Offices in:

Sydney Melbourne
Hobart Adelaide
Auckland Wellington
www.controequipment.com.au



Intelligent display shows remaining hours of battery life and memory capacity



3 way chargers can be linked together and also act as a download station



Use Airwave software on a mobile device to remotely monitor multiple dosimeters, without disturbing the wearer.



Start, stop and monitor the dosimeter remotely via an iOS or Android device.

(Airwave is available free in the Apple App Store and Google Play Store)

Simultaneous Measurements

The dBadge2 has a 'multiple simulated dosimeter' capability to display noise exposure results according to differing regional or international protocols. Regardless of what you have displayed, the dBadge2 always measures all parameters together.

- Simultaneous measurement and storage of all noise dose parameters
- Helps ensure the wrong parameters cannot be measured
- Choose how many parameters to display

Simple Operation

With it's two button operation, the dBadge2 couldn't be easier to use. After switching the dBadge2 on, apply the acoustic calibrator and press one button to perform calibration. Then hold both keys down to start a measurement, it couldn't be simpler!

- Lockable keys and display
- Automatic detection of acoustic calibrator
- Colour coded display
- Easy to mount on employees' shoulder

Intrinsically Safe

For use in flammable atmospheres, intrinsically safe models are available for potentially explosive areas such as in the oil and gas, petrochemical and mining industries.

Ex ia IIC T4 Ga

Ex ia IIIC T135°C Da

EX ia I Ma

Tamb: -20°C to +45°C

Advanced Features

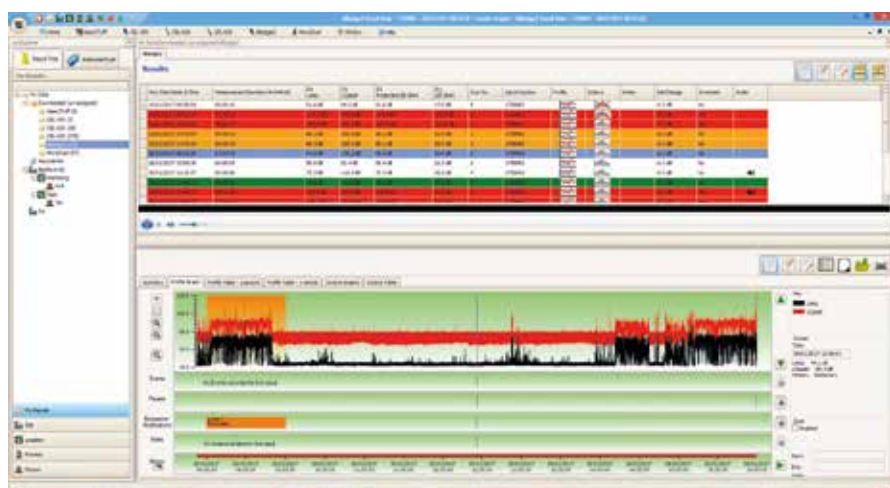
Different models of dBadge2 are available with advanced functions depending on your requirements.

- Audio notes at the start of a run to record measurement details
- Audio recording of level triggered events to identify anomalous noise
- Octave band analysis for the selection of hearing protection
- Motion sensing to assist in measurement validation

Downloading Data & Reporting...



A data Download Utility is freely available to simply download data to Excel, with automatic graphing of time history data. For more sophisticated data analysis and reporting Casella Insight is free with measurement kits. Please refer to Casella Insight Data Sheet for more detail.



Head Office:
Unit 1 / 3 Deakin Street
(PO Box 5904)
Brendale QLD 4500 Australia
Ph: +61 (0) 7 3481 9000

Perth Office:
Unit 5 / 30 Enterprise Crescent
Malaga WA 6090 Australia
Ph: +61 (0) 8 6184 7840
sales@controlequipment.com.au

Representatives/Offices in:
Sydney Melbourne
Hobart Adelaide
Auckland Wellington
www.controlequipment.com.au

Technical Specification

Standards:	ANSI S1.25:1991 R2007, IEC 61252 Ed 1.1 (2002-3)
Linear Operating Range:	55.0-140.3 dB (A) RMS
Peak Measurement Range:	90.0-143.3dB (C or Z weighted),
Sound Exposure Range:	0.0- 6,100.0 Pa2Hours
Frequency Weightings:	A, C and Z, Type 2
Time Weightings:	Fast, Slow and Impulse
Exchange Rate:	Q=3 or Q=5dB exchange rates
Threshold and Criterion:	70-90dB in 1dB steps
Operating Temperature Range:	0°C to +40°C (for ± 0.5 dB error limit) -10°C to +50°C (for ± 0.8 dB error limit)
Ambient Pressure Range:	< ± 0.5 dB over 85 - 112kPa,
Humidity Range:	< ± 0.5 dB over 30% - 90% (non-condensing),
Storage Temperature Range:	-10°C to +50°C,
Battery:	Internal NiMH, 800mAh
Run Time:	Typically 35 hours using Broadband Mode Typically 15 hours using Octave mode
Charge Time:	<6 Hours from fully discharged
Maximum Run Duration:	24 hours
Maximum number of Runs:	100
Storage Capacity:	Internal USD Flash memory - 300 hours of run data (including 1 second profile data) and up to 90 minutes of event audio recording.
PC Interface:	USB 2.0 Full speed 12Mbps via Docking Station.
Dimensions:	85L x 54W x 55H mm
Weight:	117g
Environmental I.P. Rating:	IP65 (with permeable air vent)

Stored Data Sets

The dBadge2 simultaneously records and computes all noise data for every measurement run. The comprehensive set of data containing all of the below parameters is available to view and analyse within the Casella Insight PC application or using the download utility. The Dosimeter Set-ups D1, D2 and D3 define which parameters are displayed on the instrument itself but all values are automatically stored in the memory of the dBadge2 for download.

L_{Avg}	TWA (8hr)	Projected TWA 8hr	
Dose%		Proj Dose %	
L_{AEQ}	L_{EPd} / LEX, 8h	L_{CEQ}	L_{AEQ}
L_{APk} + Time	Pa2Hrs	L_{CPk} + Time	L_{ZPk} + Time
		Pa2Secs	
	ISO Dose% (using ISO Criterion level)		
	ISO Proj Dose% (using ISO Criterion level)		
	Projected Exposure Points (using ISO Criterion level)		
	Exposure Points (using ISO Criterion level)		
	Exceedance time (L_{AS} > Exceedance level)		
	HML (LC-LA)		
L_{Cpk} >135 (count)	L_{Cpk} >137 (count)	L_{Cpk} >140 (count)	
L_{AFmx} + Time	L_{AFmin} + Time		
L_{ASmx} + Time	L_{ASmin} + Time		
L_{Atmx} + Time	L_{Aimin} + Time		
L_{AE}	Cumulative Motion Index (expressed as % motion detected during a measurement run).		

Ordering Information

dBadge2	dBadge2 Personal Noise Dosimeter
dBadge2Plus	dBadge2 Plus Personal Noise Dosimeter with Audio Recording
dBadge2Pro	dBadge2 Pro Personal Noise Dosimeter with Audio Recording and Real-time Octave Band frequency analysis

All dBadge2 units come complete with a Field Guide and Calibration Certificate. Operation manuals are available to download. For Intrinsically Safe models add 'IS' to the end of the part number e.g. dBadge2PlusIS.

Instrument Kits

Instrument Kits are available in a kit case that holds up to 10 dBadge2 units. Kits also include the CEL-120/2 Acoustic Calibrator, docking station, USB download cable and Insight Data Management Software.



Model Selection

	dBadge2	dBadge2 Plus	dBadge2 PRO
Intrinsically Safe	●	●	●
H-M-L (C-A)	●	●	●
Programmable delay timer	●	●	●
Fixed run timer	●	●	●
Pause function	●	●	●
Wireless*	●	●	●
Time history	●	●	●
Audio recording		●	●
Octave band			●

*Bluetooth 'Smart' Wireless may be disabled in any version using the USB utility App

Head Office:
Unit 1 / 3 Deakin Street
(PO Box 5904)
Brendale QLD 4500 Australia
Ph: +61 (0) 7 3481 9000

Perth Office:
Unit 5 / 30 Enterprise Crescent
Malaga WA 6090 Australia
Ph: +61 (0) 8 6184 7840
sales@controlequipment.com.au

Representatives/Offices in:
Sydney Melbourne
Hobart Adelaide
Auckland Wellington
www.controlequipment.com.au