



## COMMERCIAL & INDUSTRIAL LIGHTS



Superior LED for Industrial Applications





## Earthtrack Group

**Earthtrack** is far more than just the products and services it provides for resource-based and engineering clients. We feel that we possess a unique ability to listen closely to what clients require, pay attention to detail, solve problems and create innovative solutions to technical challenges - these are the attributes that are at the heart of our growing presence in the marketplace

### HIGH BAY LIGHTING

Earthlight LED High bay Lights are a Mercury-free, long-life cycle, patent design choice of lighting, specifically designed for use in industrial workshops, sheds, critical operation applications and area lighting. Featuring Philips and Nichia LED chips, these lamps reduce energy consumption by up to 80%, without compromising light output.



### FLOOD LIGHTING

The High Powered LED Flood Lights are a superior quality light distributed in Australian market. Available in various designated beam angles. Fitted with efficient Philips Lumileds Luxeon LED's and powered by Meanwell driver. With a special beam profile and uniform photometric distribution, this LED lighting Series achieves high optical efficiency with state of the art technology to boost overall system efficiency.



## Why Earthtrack

Our capabilities are premised on adopting an entirely different approach in our industry involvement – one that understands and appreciates the practicalities of operating mine sites, running heavy engineering workshops and finding cost-saving solutions to everyday challenges.

Our clients require, and expect from us:

- Experience and understanding of site circumstances and conditions – we talk the same language and can grasp their problems immediately
- Technical knowledge gained from years of hands-on industry experience
- An appreciation of client's special requirements that enables us to offer proactive rather than reactive solutions That we will handle their inquiry at a senior, decision-making level, and be able to provide immediate answers
- The ability to quickly source products which are not necessarily readily available, and cut through the clutter of 'red tape' and transportation issues to deliver with fast response and quick turnaround in mind
- Trouble shooting capabilities as well as the ability to solve technical problems by thinking outside the square
- We strive to provide our client with better value and products that works for the application. Our advantage is that we also develop, design and custom make products to solve clients' specific site and workplace challenges.



## LED TECHNOLOGIES

Earthtrack only uses the best components from industry leaders like Nichia, Philips, and Cree. Our LED drivers are performance tested MEANWELL drivers. We do all the testing to maximize the quality and durability to Australia's climates, and environmental facts.

### LED LIGHTS

**PHILIPS**

 **NICHIA**

 **LUMILEDS**

### LED DRIVER

 **MW**  
MEAN WELL

**INVENTRONICS**

# Contents

---

## HIGH BAY LIGHTS

|                         |    |
|-------------------------|----|
| EXTERMINATOR SERIES     | 7  |
| ECO SLIM SERIES         | 8  |
| OMEGA SERIES            | 9  |
| METRO CURVE SERIES (FG) | 10 |
| BLITZ SERIES            | 11 |
| DELINIATOR SERIES       | 12 |
| OMEGA X SERIES          | 14 |
| DELTA SERIES            | 15 |

---

## FLOOD LIGHTS

|                          |    |
|--------------------------|----|
| BLITZ SERIES FLOOD LIGHT | 17 |
| HYPERNOVA SPORTS SERIES  | 18 |
| VEVA SERIES              | 20 |
| SLIMLINE VEVA SERIES     | 22 |
| ECO SLIM FLOOD SERIES    | 24 |

---

## STREET LIGHTS

|                    |    |
|--------------------|----|
| METRO CURVE SERIES | 27 |
| AURORA SERIES      | 28 |
| RETRO MINI SERIES  | 29 |
| RETRO SERIES       | 30 |
| CALIBRE SERIES     | 32 |
| KESTREL SERIES     | 34 |

---

## CANOPY LIGHTS

|                    |       |
|--------------------|-------|
| ECO TRIDENT SERIES | 36    |
| ZEUS SERIES        | 37    |
| SKY SERIES         | 38    |
| SPARK SERIES       | 40    |
| FORTE SERIES       | 41    |
| CANOPY LIGHT       | 42-44 |

---

## DOWN LIGHTS

|             |    |
|-------------|----|
| OPAL SERIES | 47 |
|-------------|----|

---

## PROJECTION LIGHTS

|                    |    |
|--------------------|----|
| WALL WASHER SERIES | 48 |
|--------------------|----|



# HIGH BAY LIGHTS



# EXTERMINATOR SERIES

**5** YEARS WARRANTY    **65** IP RATING    **10** IK RATING    **150** LM/W



- » Ultra modern design with high heat dissipation
- » High Intensity light output
- » Low power consumption
- » IP65 water / dust resistant
- » Life span of more than 50,000 hours

BODY COLOUR  
 White     Black



| MODEL   | ETG-EXTHB100 | ETG-EXTHB150 | ETG-EXTHB200 | ETG-EXTHB240 |
|---------|--------------|--------------|--------------|--------------|
| Power   | 100W         | 150W         | 200W         | 240W         |
| Lumen   | 15,000lm     | 22,500lm     | 30,000lm     | 36,000lm     |
| LED Qty | 126pcs       | 186pcs       | 266pcs       | 346pcs       |
| Weight  | 6.1Kg        | 6.3Kg        | 6.5Kg        | 6.7Kg        |

|                       |                    |                  |              |
|-----------------------|--------------------|------------------|--------------|
| Lamp efficacy         | 150lm/W            | IP/IK Rating     | IP65 / IK10  |
| CCT(K)                | 2200K / 6500K      | Driver           | Meanwell ELG |
| LED Chips             | Philips            | Power Efficiency | >97%         |
| Input Voltage         | 90-305 VAC 50/60Hz | CRI              | >70          |
| Operating Temperature | -20°C ~ +45°C      | THD              | <15%         |
| Beam Angle            | 60° 90° 120°       | Warranty         | 5 Years      |

## MOUNTING OPTIONS

### POLE MOUNT



### EYE BOLT HOOK

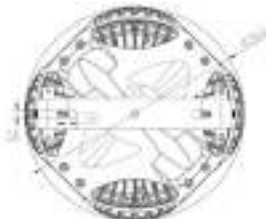


### BRACKET MOUNT



## ACCESSORIES

### PRISMATIC REFLECTOR



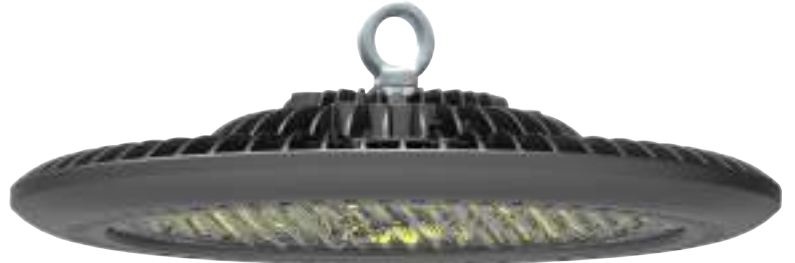
# ECO SLIM SERIES

**3**  
YEARS  
WARRANTY

**66**  
IP RATING

**>80**  
CRI

LIFE SPAN  
MORE THAN  
50,000 Hrs



- » Professionally designed heat sink
- » Precise light distribution with quality lens
- » Silicon adhesive sealing glass
- » Ultra-thin, low weight and sleek disc shape design
- » Easy installation features



| MODEL             | ETG-ESHBL105         | ETG-ESHBL155 | ETG-ESHBL205 |
|-------------------|----------------------|--------------|--------------|
| Power             | 100W                 | 150W         | 200W         |
| Luminous Efficacy | 85-90 Lm/W           | 85-90 Lm/W   | 85-90 Lm/W   |
| Lumen             | 8,500lm              | 12,750lm     | 17,000lm     |
| Power Factor      | ≥0.95                |              |              |
| CRI               | Ra≥75                |              |              |
| CCT(K)            | 3000K/ 4000K / 6000K |              |              |
| LED Chips         | SMD 2835             |              |              |
| IP Rating         | IP66                 |              |              |
| Driver            | Driverless (DOB)     |              |              |
| Input Voltage     | 200-240VAC           |              |              |
| Beam Angle        | 60° / 90° / 120°     |              |              |
| Warranty          | 3 Years              |              |              |





# OMEGA SERIES

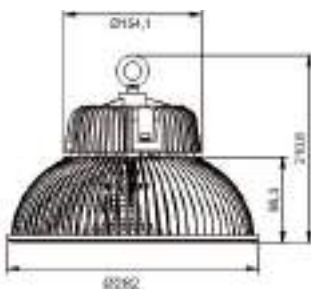
**5** YEARS WARRANTY  
**65** IP RATING  
**>80** CRI  
 LIFE SPAN MORE THAN 50,000 Hrs



- » Novel and unique modeling, small size and lightweight
- » Ring suspended with chain/wire cable
- » IP65 water resistant
- » Higher energy saving 145 lm/w
- » Life span of more than 50000 hours



| MODEL             | ETG-OHB80          | ETG-OHB100 | ETG-OHB130 | ETG-OHB150 | ETG-OHB200 | ETG-OHB240 |
|-------------------|--------------------|------------|------------|------------|------------|------------|
| Power             | 80W                | 100W       | 130W       | 150W       | 200W       | 240W       |
| Lumen             | 11,600lm           | 14,500lm   | 18,850lm   | 21,750lm   | 29,000lm   | 34,800lm   |
| Weight            | 3.5Kg              | 3.5Kg      | 4.5Kg      | 4.3Kg      | 5.0Kg      | 5.0Kg      |
| Dimension         | Ø282 x 210         | Ø282 x 210 | Ø282 x 210 | Ø282 x 210 | Ø338 x 249 | Ø338 x 249 |
| Luminous Efficacy | 145lm/W            |            |            |            |            |            |
| CCT(K)            | 2800K - 6500K      |            |            |            |            |            |
| LED Chips         | Philips 3030 SMD   |            |            |            |            |            |
| Input Voltage     | 100~305VAC 50/60Hz |            |            |            |            |            |
| Beam Angle        | 110°               |            |            |            |            |            |
| Operating Temp    | -40° ~ +60°C       |            |            |            |            |            |
| IP Rating         | IP65               |            |            |            |            |            |
| Driver            | Meanwell           |            |            |            |            |            |
| CRI               | >80                |            |            |            |            |            |
| Power Factor      | >0.95              |            |            |            |            |            |
| Life span         | >50,000            |            |            |            |            |            |
| Warranty          | 5 Years            |            |            |            |            |            |



# METRO CURVE SERIES

## FOOD GRADE

**5** YEARS WARRANTY  
**65** IP RATING  
**>70** CRI

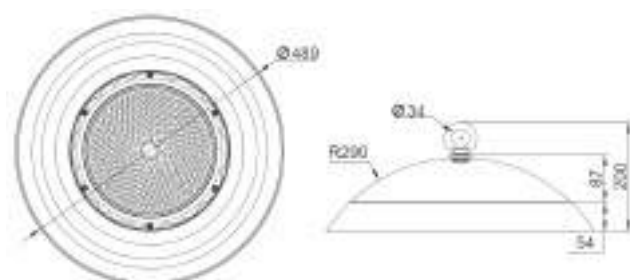


- » Specially designed for food Industry
- » Non glass acrylic lenses
- » Waterproof, Corrosion-resistant, and Anti-aging
- » Energy conservation and environment protection
- » Life span of more than 50,000 hours

BODY COLOUR  
 White  Grey



| MODEL                 | ETG-MHB100            | ETG-MHB120 | ETG-MHB150 | ETG-MHB200 |
|-----------------------|-----------------------|------------|------------|------------|
| Power                 | 100W                  | 120W       | 150W       | 200W       |
| Lumen                 | 14,000lm              | 16,800lm   | 21,000lm   | 26,000lm   |
| Luminous Efficacy     | 140lm/W               |            |            |            |
| CCT (K)               | 3000K / 4000K / 6000K |            |            |            |
| LED Chips             | Nichia (Japan)        |            |            |            |
| Input Voltage         | 100-240V 50/60Hz      |            |            |            |
| Operating Temperature | -30°C ~ 50°C          |            |            |            |
| Operating Humidity    | 15-90%RH              |            |            |            |
| Protection Class      | Class I               |            |            |            |
| IP Rating             | IP65                  |            |            |            |
| Driver                | Meanwell              |            |            |            |
| CRI                   | >70                   |            |            |            |
| Life span             | >50,000 (Ta=30°C@L70) |            |            |            |
| Dimension             | 489mm x 200mm         |            |            |            |
| Housing               | Aluminium Alloy       |            |            |            |
| Warranty              | 5 Years               |            |            |            |



# BLITZ SERIES

**5** YEARS WARRANTY  
**65** IP RATING  
**>70** CRI  
 LIFE SPAN MORE THAN 50,000 Hrs



- Much brighter than ordinary highbays
- Latest technology LED
- Better heat dissipation & higher durability
- Over 5 Intelligent Controls



- ZigBee Control
- Dimmable
- Daylight Sensor
- Microwave Sensor
- PIR Sensor

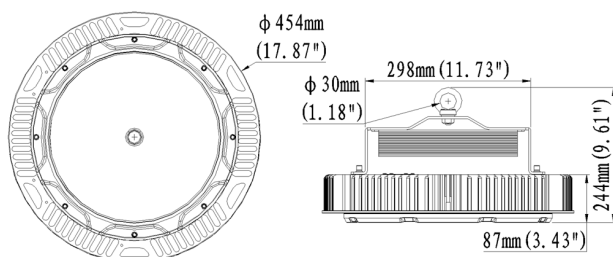


| MODEL                  | ETG-BHBL450                                    | ETG-BHBL600 | ETG-BHBL450BV  | ETG-BHBL600BV            |
|------------------------|--|-------------|----------------|--------------------------|
| Power                  | 450W   | 600W        | 450W           | 600W                     |
| Lumen                  | 72,000lm                                       | 96,000lm    | 72,000lm       | 96,000lm                 |
| Luminous Efficacy      | 160lm/W  |             | PF             | >0.92                    |
| CCT(K)                 | 3000K, 4000K, 6000K                            |             | Operating Temp | -30°C to +50°C           |
| LED Chips              | SMD  |             | Beam Angle     | 30° (60°, 120° optional) |
| Protection Class       | Class-1  |             | CRI            | >70 (>80 Optional)       |
| Input Surge Protection | 6kV line-line, 10kV line-earth                 |             | Life span      | 70,000(Ta=30°C @L70)     |
| Input Voltage          | 100-247 VAC 50/60Hz                            |             | Dimension      | Φ454×244MM               |
| Intelligent Controls   | ZigBee / Daylight / Microwave / PIR / Dimmable |             | Warranty       | 5 Years                  |

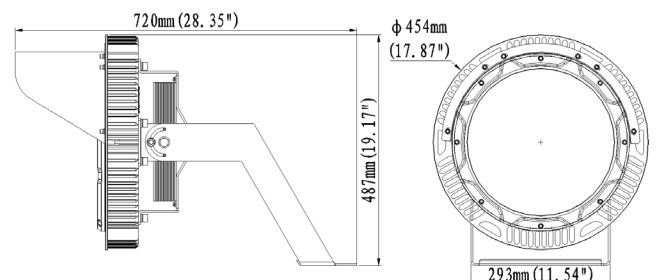
## MOUNTING OPTIONS

- EYE HOOK BOLT HANGING
- CEILING MOUNT
- WALL MOUNT

### ➤ AS HIGH BAY



### ➤ AS FLOOD LIGHT



# DELINIATOR SERIES

**5** YEARS WARRANTY  
**65** IP RATING  
**>80** CRI  
 LIFE SPAN MORE THAN 50,000 Hrs

- » Suitable for industrial and commercial application
- » 76% less power compare to HID Lights
- » Wide range of beam angle
- » Fast heat dissipation through inner and outer vents
- » LED Life span >50,000 hrs and beyond



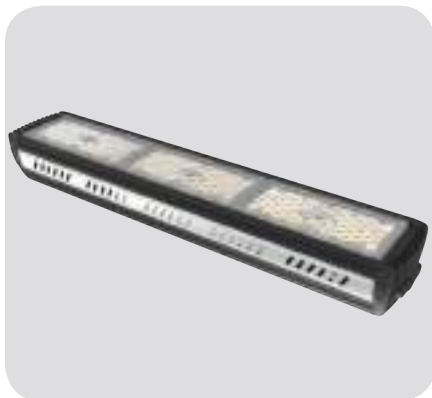
ETG-DLHB50



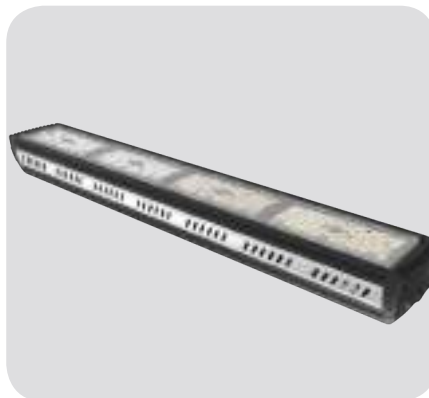
ETG-DLHB80



ETG-DLHB100



ETG-DLHB150



ETG-DLHB200



ETG-DLHB300

# DELINIATOR SERIES

| MODEL             | ETG-DLHB50        | ETG-DLHB80 | ETG-DLHB100 | ETG-DLHB150 | ETG-DLHB200 | ETG-DLHB300 |
|-------------------|-------------------|------------|-------------|-------------|-------------|-------------|
| Power             | 50W               | 80W        | 100W        | 150W        | 200W        | 300W        |
| Lumen (lm)        | 6,500lm           | 10,400lm   | 13,000lm    | 19,500lm    | 26,000lm    | 39,000lm    |
| HID Equivalent    | 120W              | 150W       | 200-250W    | 300-350W    | 400-450W    | 600-650W    |
| CCT(K)            | 2000K - 6500K     |            |             |             |             |             |
| Luminous Efficacy | 130lm/W           |            |             |             |             |             |
| LED Source        | Philips 3030      |            |             |             |             |             |
| Input Voltage     | 90~305VAC 50/60Hz |            |             |             |             |             |
| Operating Temp    | -30°C ~ +45°C     |            |             |             |             |             |
| IP Rating         | IP67              |            |             |             |             |             |
| Power Efficiency  | >97%              |            |             |             |             |             |
| CRI               | >80               |            |             |             |             |             |
| Life span         | >50,000           |            |             |             |             |             |
| Warranty          | 5 Years           |            |             |             |             |             |

## MOUNTING OPTIONS



**SUSPENDED MOUNTED**



**CEILING MOUNTED**



**WALL MOUNTED**



**MICROWAVE SENSOR**

# OMEGA X SERIES

**5** YEARS WARRANTY  
**65** IP RATING  
**>80** CRI  
 LIFE SPAN MORE THAN 50,000 Hrs

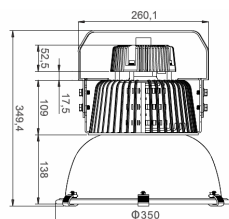


- High heat dissipation aluminium body
- Intelligent energy saving effect
- Wide range of beam angle
- LED Life span greater than 50,000 hours and beyond

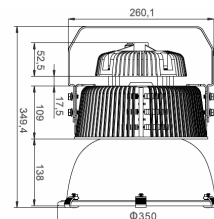


| MODEL             | ETG-OXHB80                            | ETG-OXHB100 | ETG-OXHB130 | ETG-OXHB150 | ETG-OXHB200 | ETG-OHB240 |
|-------------------|---------------------------------------|-------------|-------------|-------------|-------------|------------|
| Power             | 80W                                   | 100W        | 130W        | 150W        | 200W        | 240W       |
| Lumen             | 11,600lm                              | 14,500lm    | 18,850lm    | 21,750lm    | 29,000lm    | 34,800lm   |
| Dimension         | Ø350 x 349                            | Ø350 x 349  | Ø350 x 349  | Ø350 x 349  | Ø350 x 349  | Ø350 x 349 |
| Luminous Efficacy | 145lm/W                               |             |             |             |             |            |
| CCT(K)            | 2800 -3200K / 4000-4500K / 5500-6500K |             |             |             |             |            |
| LED Chips         | SMD 3030                              |             |             |             |             |            |
| Input Voltage     | 100-305VAC 50/60Hz                    |             |             |             |             |            |
| Beam Angle        | 25°/ 45°/ 60°/ 90°/ 120°              |             |             |             |             |            |
| Operating Temp    | -40° ~ +60°C                          |             |             |             |             |            |
| IP Rating         | IP65                                  |             |             |             |             |            |
| Driver            | Meanwell                              |             |             |             |             |            |
| CRI               | >80                                   |             |             |             |             |            |
| PF                | >0.95                                 |             |             |             |             |            |
| Life span         | Greater than 50,000                   |             |             |             |             |            |
| Warranty          | 5 Years                               |             |             |             |             |            |

80W / 100W / 130W / 150W



200W / 240W



# DELTA SERIES

**5**  
YEARS  
WARRANTY

**65**  
IP RATING

**>70**  
CRI

LIFE SPAN  
MORE THAN  
50,000 Hrs



- High performance SMD design
- Efficacy up to 130lm/W
- LED life expectation >80,000hrs
- IK10 Polycarbonate diffuser
- Dimmable
- Superior temperature stability



**RoHS**

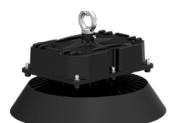
| MODEL          | ETG-D2HLB-100 | ETG-D2HLB-150 | ETG-D2HLB-200 | ETG-D2HLB-240 | ETG-D2HLB-300 |
|----------------|---------------|---------------|---------------|---------------|---------------|
| Power(W)       | 100W          | 150W          | 200W          | 240W          | 300W          |
| LED Chips qty  | 132           | 189           | 252           | 302           | 532           |
| Lumen (lm)     | 14,000lm      | 21,800lm      | 28,000lm      | 36,000lm      | 45,000lm      |
| PF             | >0.93         | >0.92         | >0.9          | >0.9          | >0.9          |
| Weight         | 6.1kg         | 6.4kg         | 7.2kg         | 7.2kg         | 8.1kg         |
| HID Equivalent | 300W          | 400-600W      | 700W          | -             | -             |

|                   |                     |            |                       |
|-------------------|---------------------|------------|-----------------------|
| Luminous Efficacy | 130lm/W             | PF         | >0.92                 |
| CCT(K)            | 5000K (Cool White)  | LED Source | Nichia LED Chips 1.4W |
| LED Driver        | MeanWell            | CRI        | Ra70, Ra80            |
| IP/IK Rating      | IP65 /IK10          | Life span  | 50,000 Hrs            |
| Input Voltage     | 100-240 VAC 50/60Hz | Dimension  | Ø 388 × 195.5mm       |
| Operating Temp    | -30°C to +50°C      | Warranty   | 5 Years               |

## CONTROL OPTIONS



ZigBee Control



Dali Control



Dimmable

## ACCESSORIES



Microwave Motion Sensor



Daylight Sensor



Emergency Light Kit



Aluminium Reflector

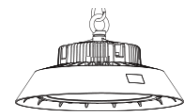
## MOUNTING OPTIONS



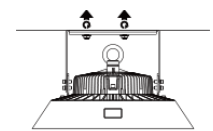
Pipe Mounted Bracket



Wall Mounting Bracket



Loop Hook Mount



Surface Mount

# SATURN SERIES

**5**  
YEARS  
WARRANTY

**65**  
IP RATING

**>70**  
CRI

LIFE SPAN  
MORE THAN  
50,000 Hrs



- » Ultra modern design with high heat dissipation
- » 150lm/w High Intensity light output
- » Low power consumption
- » Long life endurance



| MODEL        | ETG-SHBL120 | ETG-SHBL150 | ETG-SHBL200 |
|--------------|-------------|-------------|-------------|
| Power(W)     | 120W        | 150W        | 200W        |
| Light Source | Lumileds    | Lumileds    | Lumileds    |
| Lumen (lm)   | 18,00lm     | 22,500lm    | 30,000lm    |
| Net Weight   | 4.0 Kg      | 4.8Kg       | 5.6Kg       |

|                   |                    |            |                                       |
|-------------------|--------------------|------------|---------------------------------------|
| Luminous Efficacy | 150lm/W            | PF         | >0.97                                 |
| CCT(K)            | 4000K, 5000, 5700K | LED Source | LUMILEDS                              |
| LED Driver        | MeanWell           | CRI        | Ra70                                  |
| IP/IK Rating      | IP65               | Life span  | 50,000 Hrs                            |
| Input Voltage     | 100-277 VAC        | Controls   | 1-10V Dimming/Microwave/Zigbee system |
| Operating Temp    | -30°C to +50°C     | Material   | Aluminum, PC & Glass                  |
| Beam Angle        | 80° / 90°/ 110°    | Warranty   | 5 Years                               |

## MOUNTING OPTIONS

HOOK



BRACKET



CHAIN



## ACCESSORIES

PRISMATIC REFLECTOR



## DIMENSIONS



ETG-SHB-120



ETG-SHB-150



ETG-SHB-200







# FLOOD LIGHTS





# HYPERNOVA SERIES

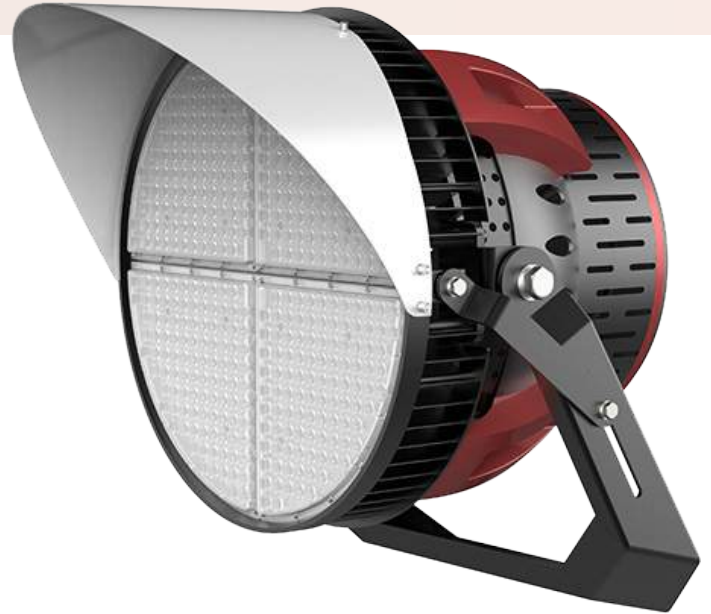
**5**  
YEARS  
WARRANTY

**66**  
IP RATING

**>70**  
CRI

LIFE SPAN  
MORE THAN  
50,000 Hrs

- » Improved thermal management
- » Wireless control system
- » Easy installation + Adjustable beam angle
- » Solid state design (SSD)
- » Most efficient photoelectric conversion
- » Ultra-low EMI noise generation
- » Light uniformity & reduced glare with micro multi facet optic



**TURNION ARM MOUNT**



**REAR VIEW**



**SIDE VIEW**



**SPIGOT MOUNT**



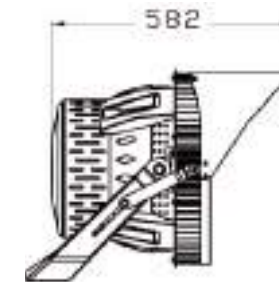
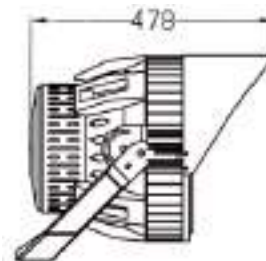
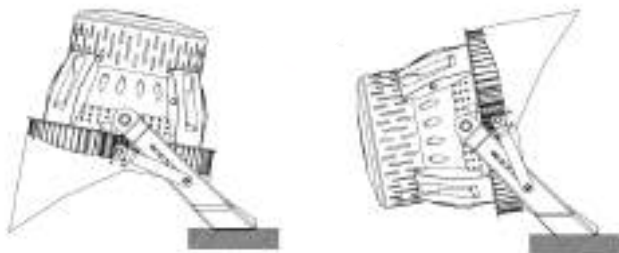
**FRONT VIEW**

# HYPERNOVA SERIES



| MODEL              | ETG-HSL300                        | ETG-HSL400   | ETG-HSL500   | ETG-HSL600   | ETG-HSL750   | ETG-HSL1000  | ETG-HSL1200  |
|--------------------|-----------------------------------|--------------|--------------|--------------|--------------|--------------|--------------|
| Power(W)           | 300W                              | 400W         | 500W         | 600W         | 750W         | 1000W        | 1200W        |
| Lumen (lm)         | 39,000lm                          | 52,000lm     | 65,000lm     | 78,000lm     | 97,500lm     | 130,000lm    | 156,000lm    |
| Dimensions         | 350x215 mm                        | 533 x 582 mm | 533 x 582 mm | 533 x 582 mm | 533 x 582 mm | 533 x 582 mm | 533 x 582 mm |
| Lm/W               | 130Lm/W                           |              |              |              |              |              |              |
| Light Source       | Osram, Cree                       |              |              |              |              |              |              |
| LED Driver         | Meanwell                          |              |              |              |              |              |              |
| CCT(K)             | 3000K, 4000K, 5000K, 5700K, 6500K |              |              |              |              |              |              |
| IP Rating          | IP66                              |              |              |              |              |              |              |
| CRI                | 70Ra                              |              |              |              |              |              |              |
| AC Input           | 100 - 277V / 240 - 480V           |              |              |              |              |              |              |
| Operating Temp     | -40°C ~ +55°C                     |              |              |              |              |              |              |
| Power Factor       | 0.95                              |              |              |              |              |              |              |
| Light distribution | 15*15, 25*25, 40*40, 60*60        |              |              |              |              |              |              |
| THD                | <15%                              |              |              |              |              |              |              |
| Input Protection   | 10KV Current Surge                |              |              |              |              |              |              |
| Dimming Control *  | 1-10V-DMX .DALI                   |              |              |              |              |              |              |
| Warranty           | 5 Years                           |              |              |              |              |              |              |

Adjustable angle 240°



# VEVA SERIES

**5** YEARS WARRANTY  
**67** IP RATING  
**>80** CRI  
 LIFE SPAN MORE THAN 50,000 Hrs

- Reducing energy consumption by over 50% per unit
- IP65 High impact PC optical lens
- Better heat dissipation through heat sink and air flow channels
- LED Driver built with Surge Protection Device (SPD)
- Life span of more than 50,000 hours



ETG-VFL80S / ETG-VFL100S



ETG-VFL150S



ETG-VFL200S



ETG-VFL250S



ETG-VFL300S



ETG-VFL400S / ETG-VFL500S



ETG-VFL600S

HEAVY DUTY BRACKET



TENNON MOUNT



SLIP FITTER



ANTI-GLARE SHIELD



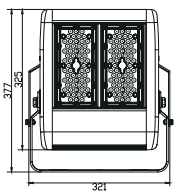
LASER POINTER



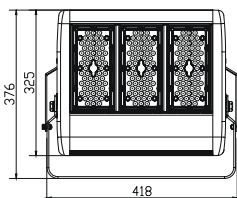
# VEVA SERIES



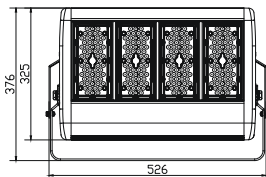
| MODEL NUMBER          | ETG-VFL80S  | ETG-VFL100S    | ETG-VFL150S    | ETG-VFL200S       | ETG-VFL250S    | ETG-VFL300S     | ETG-VFL400S     | ETG-VFL500S     | ETG-VFL600S     |
|-----------------------|---|----------------|----------------|-------------------|----------------|-----------------|-----------------|-----------------|-----------------|
| Power                 | 80W   | 100W           | 150W           | 200W              | 250W           | 300W            | 400W            | 500W            | 600W            |
| Lumen (lm)            | 10,400lm  | 13,000lm       | 19,500lm       | 26,000lm          | 32,500lm       | 39,000lm        | 52,000lm        | 65,000lm        | 78,000lm        |
| Dimension             | 321 x 377 x 91  | 321 x 377 x 91 | 418 x 376 x 91 | 526 x 376 x 91 mm | 631 x 376 x 91 | 444 x 506 x 148 | 654 x 506 x 148 | 654 x 506 x 148 | 763 x 506 x 148 |
| Net Weight            | 6.0kg   | 6.0kg          | 6.0kg          | 8.6kg             | 10.2kg         | 15.3kg          | 17.3kg          | 18.3kg          | 23.5kg          |
| IP Rating             | IP67  |                |                |                   |                |                 |                 |                 |                 |
| LED Efficacy          | 130Lm/W   |                |                |                   |                |                 |                 |                 |                 |
| CRI                   | >80   |                |                |                   |                |                 |                 |                 |                 |
| Operating Temperature | -30°C ~ +45°C   |                |                |                   |                |                 |                 |                 |                 |
| Voltage               | 90-305 V/347-480 V - 50-60 Hz   |                |                |                   |                |                 |                 |                 |                 |
| Material              | Housing, Mount & Heat sink: Aluminum & Stent: High quality iron/stainless steel |                |                |                   |                |                 |                 |                 |                 |
| Beam Angle            | 30° 60° 90° 60x135° 85x135°   |                |                |                   |                |                 |                 |                 |                 |
| LED Color Temperature | 2000-7000 K (+/-300 K)  |                |                |                   |                |                 |                 |                 |                 |
| Light Source          | PHILIPS LUXEON 3030 LUMINOUS  |                |                |                   |                |                 |                 |                 |                 |
| LED Driver            | Meanwell  |                |                |                   |                |                 |                 |                 |                 |
| Connection            | Three core cable  |                |                |                   |                |                 |                 |                 |                 |
| Life span             | More than 50000 Hrs   |                |                |                   |                |                 |                 |                 |                 |
| Warranty              | 7 Years   |                |                |                   |                |                 |                 |                 |                 |



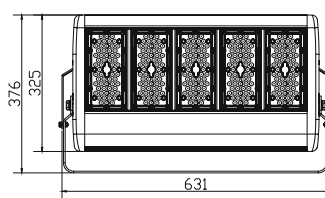
ETG-VFL-80S / ETG-VFL100S



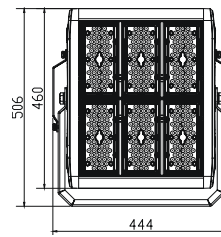
ETG-VFL150S



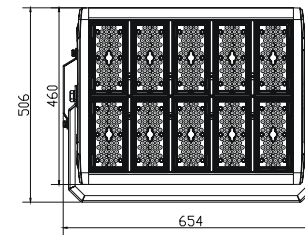
ETG-VFL200S



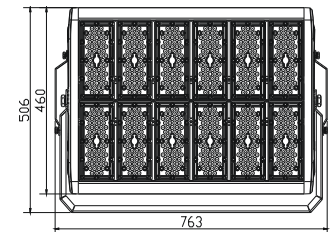
ETG-VFL250S



ETG-VFL300S



ETG-VFL400S / ETG-VFL500S



ETG-VFL600S

# SLIMLINE VEVA SERIES



**5** YEARS WARRANTY

**65** IP RATING

**>80** CRI

LIFE SPAN MORE THAN 50,000 Hrs

- Reducing energy consumption by over 50% per unit
- IP65 High impact PC optical lens
- Better heat dissipation through heat sink and air flow channels
- LED Driver built with Surge Protection Device (SPD)
- Life span of more than 50,000 hours



ETG-SVF10



ETG-SVF20



ETG-SVF30



ETG-SVF50



ETG-SVF100



ETG-SVF150



ETG-SVF200



ETG-SVF300

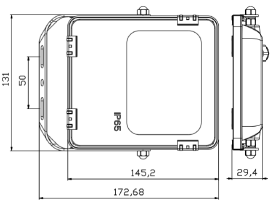




# SLIMLINE VEGA SERIES

| MODEL NUMBER             | ETG-SVF10      | ETG-SVF20      | ETG-SVF30      | ETG-SVF50      | ETG-SVF100     | ETG-SVF150     | ETG-SVF200     | ETG-SVF300     |
|--------------------------|----------------|----------------|----------------|----------------|----------------|----------------|----------------|----------------|
| <b>Power</b>             | 10W            | 20W            | 30W            | 50W            | 100W           | 150W           | 200W           | 300W           |
| <b>Lumen (lm)</b>        | 1200lm         | 2,400lm        | 3,600lm        | 6,500lm        | 13,000lm       | 21,000lm       | 28,000lm       | 43,000lm       |
| <b>Dimension</b>         | 172 x 131 x 29 | 182 x 138 x 29 | 252 x 180 x 44 | 350 x 256 x 62 | 350 x 256 x 62 | 440 x 337 x 62 | 495 x 375 x 62 | 538 x 465 x 96 |
| <b>Net Weight</b>        | 1.4kg          | 1.5kg          | 2.0kg          | 2.6kg          | 2.7kg          | 4.2kg          | 4.8kg          | 4.8kg          |
| <b>Luminous efficacy</b> | 125lm/W        | 125lm/W        | 125lm/W        | 125lm/W        | 135lm/W        | 135lm/W        | 135lm/W        | 135lm/W        |

|                              |                                 |                     |  |
|------------------------------|---------------------------------|---------------------|--|
| <b>IP Rating</b>             | IP65 (10-50W)   IP66 (100-300W) | <b>Material</b>     | Aluminum & High quality iron/stainless steel |
| <b>CRI</b>                   | Ra>80                           | <b>CCT</b>          | 3000K, 4000K, 6000K                          |
| <b>Power Factor</b>          | >0.9                            | <b>Light Source</b> | Philips LUXEON 3030 LUMINOUS                 |
| <b>Operating Temperature</b> | -40°C ~ +40°C                   | <b>LED Driver</b>   | Meanwell                                     |
| <b>Voltage / Current</b>     | AC100-240V 50/60Hz              | <b>Warranty</b>     | 5 Years                                      |



ETG-SVF10



ETG-SVF20



ETG-SVF30



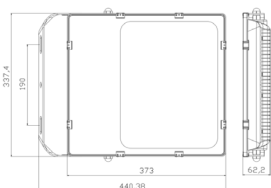
ETG-SVF50



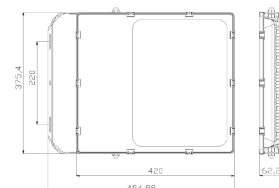
ETG-SVF100



ETG-SVF150



ETG-SVF200



ETG-SVF300

# ECO SLIM FLOOD SERIES

**5**  
YEARS  
WARRANTY

**66**  
IP RATING

**>80**  
CRI

LIFE SPAN  
MORE THAN  
50,000 Hrs

- » High performance coating for rust prevention
- » Instant full bright on power
- » New low weight slim design
- » Better heat dissipation
- » More than 50,000 hours of life span



SAA ETL FC CE RoHS



ETG-ESFL035



ETG-ESFL055



ETG-ESFL075



ETG-SVFL105



ETG-SVFL155

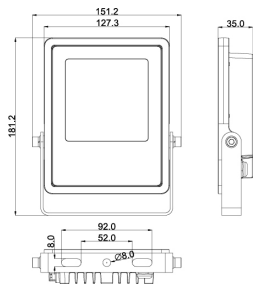


ETG-SVFL205

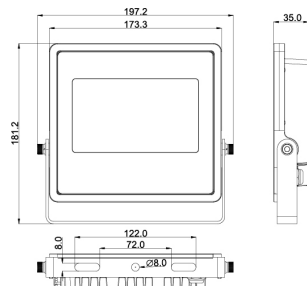
# ECO SLIM FLOOD SERIES



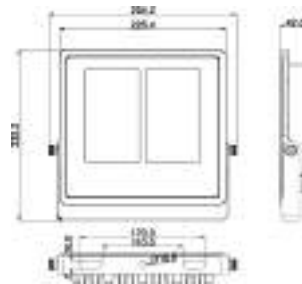
| MODEL NUMBER      | ETG-ESFL035   | ETG-ESFL055 | ETG-ESFL075    | ETG-ESFL105    | ETG-ESFL155    | ETG-ESFL205    |
|-------------------|---|-------------|----------------|----------------|----------------|----------------|
| Power             | 30W   | 50W         | 70W            | 100W           | 150W           | 200W           |
| Lumen (lm)        | 2700lm  | 4750lm      | 6650lm         | 7600lm         | 14,200lm       | 18,200lm       |
| Dimension         | 151x181x35  | 197x181x35  | 254 x 232 x 42 | 255 x 232 x 42 | 254 x 232 x 42 | 254 x 232 x 42 |
| Net Weight        | 0.75kg  | 0.95kg      | 1.75kg         | 1.75kg         | 3.75kg         | 3.75kg         |
| IP Rating         | IP66  |             |                |                |                |                |
| Input Voltage     | AC220V/50Hz   |             |                |                |                |                |
| Operating Temp    | -30 ~ +45°  |             |                |                |                |                |
| CRI               | >80   |             |                |                |                |                |
| Luminous Efficacy | 120-130lm/W   |             |                |                |                |                |
| Material          | Housing, Mount & Heat sink: Aluminum & Stent: High quality iron/stainless steel |             |                |                |                |                |
| Beam Angle        | 110°  |             |                |                |                |                |
| CCT (K)           | 3000K, 4000K, 6000K   |             |                |                |                |                |
| Connection        | Three core cable  |             |                |                |                |                |
| Life span         | More than 50000 Hrs   |             |                |                |                |                |
| Warranty          | 5 Years   |             |                |                |                |                |



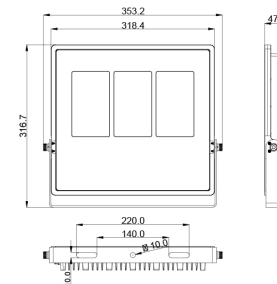
ETG-ESFL035



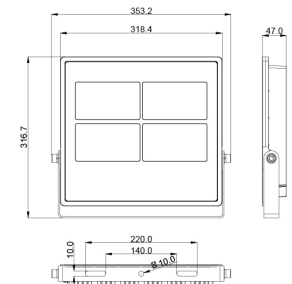
ETG-ESFL055



ETG-ESFL075 / ETG-ESFL105



ETG-ESFL155



ETG-ESFL205



# STREET LIGHTS



# METRO CURVE SERIES

**5**  
YEARS  
WARRANTY

**66**  
IP RATING

**>73**  
CRI

LIFE SPAN  
MORE THAN  
50,000 Hrs

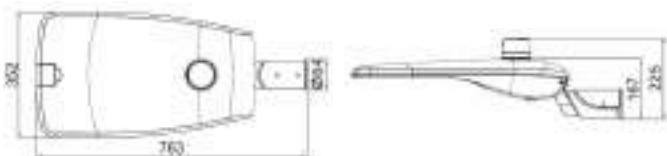


- » Adjustable knuckle bracket included
- » Sleek and smooth body diminishes dust accumulation
- » Water proof cover and anti-corrosion
- » Energy conservation and environmental protection
- » Tool-free replacement and Easy maintenance

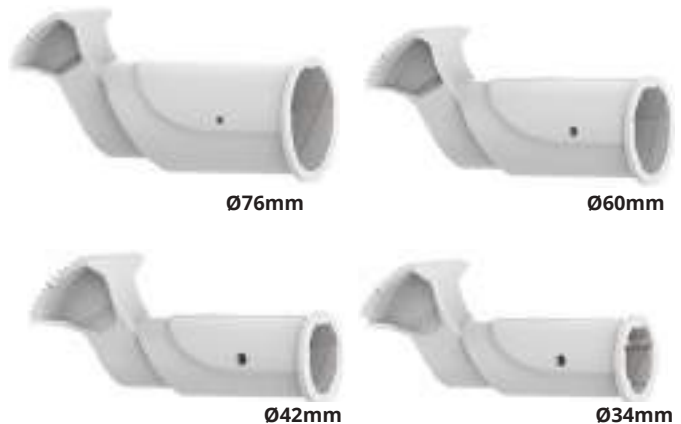


| MODEL             | ETG-MCSL30                      | ETG-MCSL50 | ETG-MCSL70 | ETG-MCSL90       | ETG-MCSL120                          | ETG-MCSL150 |
|-------------------|---------------------------------|------------|------------|------------------|--------------------------------------|-------------|
| Power             | 30W                             | 50W        | 70W        | 90W              | 120W                                 | 150W        |
| Lumen             | 3,900lm                         | 6,500lm    | 9,100lm    | 11,700lm         | 15,600lm                             | 18,750lm    |
| Driver            | Sosen                           |            |            | Meanwell         |                                      |             |
| Luminous Efficacy | 130lm/W / 125lm/W (150W)        |            |            | IP Rating        | IP66                                 |             |
| CCT(K)            | 4000K (Optional 3000K-5000K)    |            |            | CRI              | Ra70, Ra80                           |             |
| LED Chips         | Nichia Chip (Japan)             |            |            | Protection Class | Class I                              |             |
| Input Voltage     | 100-240 VAC 50/60Hz / 36-48 VDC |            |            | Beam Angle       | Type II Medium Range                 |             |
| Output Current    | 0.65A                           |            |            | Housing          | ALU Alloy + PC Lens + Tempered Glass |             |
| Operating Temp    | -30°C ~ 45°C                    |            |            | Life Span        | >50,000 (Ta=30°C@L70)                |             |
| Power Factor      | >0.90                           |            |            | Warranty         | 5 Years                              |             |

## DIMENSIONS



## SPIGOT MOUNTING OPTION



## OPTIONAL DAYLIGHT SENSOR



# AURORA SERIES

**5**  
YEARS  
WARRANTY

**66**  
IP RATING

**>70**  
CRI

LIFE SPAN  
MORE THAN  
50,000 Hrs



- High output lumen efficacy 135lm/W and 155lm/W
- 76% less power compare to HID Lights
- External airflow fins for better heat dissipation
- Various optics & mounting options for different applications



| MODEL                  | ETG-ACP180   | ETG-ACP240      | ETG-ACP300      | ETG-ACP450            | ETG-ACP600      |
|------------------------|--|-----------------|-----------------|-----------------------|-----------------|
| Power                  | 180W   | 240W            | 300W            | 450W                  | 600W            |
| Lumen Output (3K)      | 24,300lm   | 32,400lm        | 42,000lm        | 60,750lm              | 81,000lm        |
| Lumen Output (5K)      | 27,900lm   | 37,200lm        | 46,500lm        | 69,750lm              | 93,000lm        |
| Distribution           | Type II Medium / Type V Short / NEMA 3x3 / NEMA 6x4                  |                 |                 |                       |                 |
| Coming Soon            | Type III medium / Type IV medium / Type II very / Type II very short |                 |                 |                       |                 |
| Net Weight             | 8.6kg ± 0.3  | 8.6kg ± 0.3     | 9.2kg ± 0.3     | 16.3kg ± 0.3          | 17.8kg ± 0.3    |
| Dimensions (mm)        | 703 x 322 x 143  | 703 x 322 x 143 | 703 x 322 x 143 | 752 x 601 x 149       | 752 x 601 x 149 |
| Luminous Efficacy      | (3K) 135 lm/W   (5K) 155lm/W   |                 | IP Rating       | IP66                  |                 |
| CCT(K)                 | 5000K (3K - 4K Optional)   |                 | CRI             | Ra70, (Optional Ra80) |                 |
| Input Voltage          | 100-277 VAC   277-480 VAC 50/60Hz                                    |                 | Driver          | Meanwell              |                 |
| Input Surge Protection | 10KV SPD   |                 | Body            | Alu alloy + PC Lens   |                 |
| Operating Temp         | -30°C to +50°C   |                 | Life Span       | >50,000 (Ta=30°C@L70) |                 |
| Power Factor           | >0.92  |                 | Warranty        | 5 Years               |                 |

## MOUNTING OPTIONS & ACCESSORIES

### ROUND ROD BRACKET



### U-SHAPED BRACKET



### STRAIGHT ROD BRACKET



### WALL MOUNT BRACKET



### OPTIONAL DAYLIGHT SENSOR



# RETRO MINI SERIES

**5**  
YEARS  
WARRANTY

**65**  
IP RATING

**>70**  
CRI

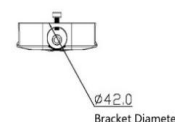
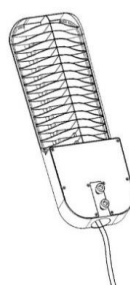
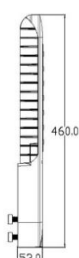
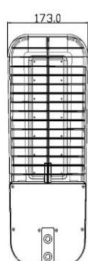
LIFE SPAN  
MORE THAN  
54,000 Hrs



- » Precision engineered individual lenses
- » IP65 Water and Dust proof
- » IK08 Impact resistant
- » Uni-body die-cast aluminum fixture
- » Tool-free replacement and easy maintenance

BODY COLOUR  
 Silver  Black

| MODEL              | ETG-MRSL20                        | ETG-MRSL30 | ETG-MRSL40 | ETG-MRSL50 | ETG-MRSL60 |
|--------------------|-----------------------------------|------------|------------|------------|------------|
| Power              | 20W                               | 30W        | 40W        | 50W        | 60W        |
| Lumen              | 2,830lm                           | 4,146lm    | 5,448lm    | 6,440lm    | 7470lm     |
| Luminous Efficacy  | 130lm/W                           |            |            |            |            |
| Colour Temperature | 3000K, 4000K, 5000K, 5700K, 6500K |            |            |            |            |
| LED Chips          | Lumileds 3030                     |            |            |            |            |
| Input Voltage      | 100 - 277VAC (50-60Hz)            |            |            |            |            |
| Operating Temp     | -30°C ~ 45°C                      |            |            |            |            |
| IP Rating          | IP65                              |            |            |            |            |
| Driver             | Inventronics                      |            |            |            |            |
| CRI                | 70, 80 and 90 Optional            |            |            |            |            |
| Distribution       | Type II                           |            |            |            |            |
| Life span          | 50,000 Hours (L90)                |            |            |            |            |
| Dimension          | 460 x 173 x 53 mm                 |            |            |            |            |
| Weight             | 2.8Kg                             |            |            |            |            |
| Housing            | Powder coated die-cast Aluminium  |            |            |            |            |
| Warranty           | 5 Years                           |            |            |            |            |



# RETRO SERIES

**5** YEARS WARRANTY   
 **66** IP RATING   
 **10** IK RATING   
 **>75** CRI

- » Efficacy 130lm/W
- » IP66 Waterproof, IK10 Impact resistant and anti-corrosion body.
- » Type-II, Type-III distribution
- » Very low Unified Glare Rating (UGR)
- » High-Performance driver.



ETG-RSL40



ETG-RSL80



ETG-RSL120



ETG-RSL160



ETG-RSL200



ETG-RSL240



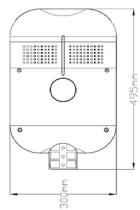
ETG-RSL280



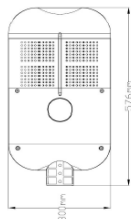
# RETRO SERIES



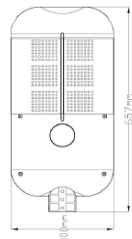
| MODEL NUMBER          | ETG-RSL40                            | ETG-RSL80         | ETG-RSL120        | ETG-RSL160        | ETG-RSL200        | ETG-RSL240       | ETG-RSL280        |
|-----------------------|--------------------------------------|-------------------|-------------------|-------------------|-------------------|------------------|-------------------|
| Power                 | 40W                                  | 80W               | 120W              | 160W              | 200W              | 240W             | 280W              |
| Lumen (lm)            | 5200lm                               | 10,400lm          | 15,600lm          | 20,800lm          | 26,000lm          | 31,200lm         | 36,400lm          |
| IP Rating             | IP66                                 |                   |                   |                   |                   |                  |                   |
| IK Rating             | IK10                                 |                   |                   |                   |                   |                  |                   |
| PF                    | PF>0.9                               |                   |                   |                   |                   |                  |                   |
| CRI                   | 70, 80 (90 Optional)                 |                   |                   |                   |                   |                  |                   |
| Luminous Efficacy     | 130Lm/W (Optional 170lm/W)           |                   |                   |                   |                   |                  |                   |
| Operating Temperature | -30°C ~ +50°C                        |                   |                   |                   |                   |                  |                   |
| Voltage               | 100- 480 VAC (50-60Hz)               |                   |                   |                   |                   |                  |                   |
| DC Support            | 12V                                  | 24V               | 24V               | -                 | -                 | -                | -                 |
| Material              | Die-cast Aluminum, PC Lens           |                   |                   |                   |                   |                  |                   |
| Beam Angle            | Type- II & Type III                  |                   |                   |                   |                   |                  |                   |
| Color Temperature     | 3000-3500k / 4000-4500k / 6000-6500k |                   |                   |                   |                   |                  |                   |
| Light Source          | PHILIPS LUXEON T                     |                   |                   |                   |                   |                  |                   |
| Dimension             | 495 x 300 x 107mm                    | 576 x 300 x 107mm | 657 x 300 x 107mm | 738 x 300 x 107mm | 819 x 300 x 107mm | 900x 300 x 107mm | 981 x 300 x 107mm |
| Net Weight            | 5.8kg                                | 7.2kg             | 8.6kg             | 9.7kg             | 10.9kg            | 12.3kg           | 15.8kg            |
| Life span             | 50,000 Hours                         |                   |                   |                   |                   |                  |                   |
| Warranty              | 5 Years                              |                   |                   |                   |                   |                  |                   |



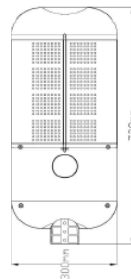
ETG-RSL40



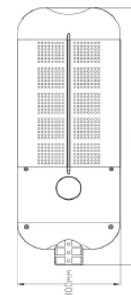
ETG-RSL80



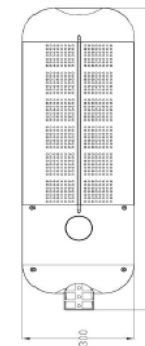
ETG-RSL120



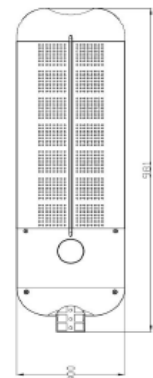
ETG-RSL160



ETG-RSL200



ETG-RSL240



ETG-RSL280

# CALIBRE SERIES

**5** YEARS WARRANTY  
**66** IP RATING  
**08** IK RATING  
**>70** CRI



BODY COLOUR  
 Silver  Black

- » Elegant design in silver/black
- » Breather gaps between modules for better heat dissipation
- » High performance Lumiled LUXEON TX LED
- » Energy saving up to 70% compared to traditional HID
- » Vertical and horizontal pole mounting option



ETG-CSL35



ETG-CSL65



ETG-CSL100



ETG-CSL135



ETG-CSL165



ETG-CSL200



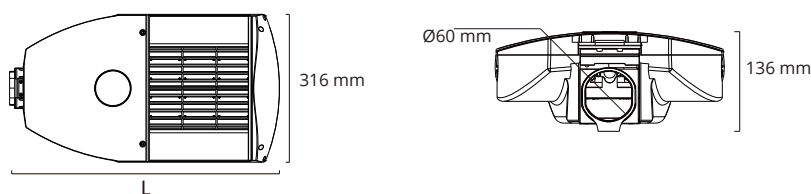
ETG-CSL230

# CALIBRE SERIES



| MODEL              | ETG-CSL35   | ETG-CSL65 | ETG-CSL100 | ETG-CSL135 | ETG-CSL165 | ETG-CSL200 | ETG-CSL230 |
|--------------------|---|-----------|------------|------------|------------|------------|------------|
| Power              | 35W   | 65W       | 100W       | 135W       | 165W       | 200W       | 230W       |
| Lumen              | 3,850lm   | 7,150lm   | 11,000lm   | 14,850lm   | 18,150lm   | 22,000lm   | 25,300lm   |
| Luminous Efficacy  | 110lm/W   |           |            |            |            |            |            |
| Working Current    | 750mA   |           |            |            |            |            |            |
| CCT(K)             | 5000K   Optional 3000K/ 4000K / 5700K   |           |            |            |            |            |            |
| LED Source         | Lumileds Chips  |           |            |            |            |            |            |
| Input Voltage (AC) | 100-240V / 277V (50-60Hz)   |           |            |            |            |            |            |
| Input Voltage (DC) | 12V/24V   | 24V       | 24V        | -          | -          | -          | -          |
| Operating Temp     | -40°C ~ 50°C  |           |            |            |            |            |            |
| IP Rating          | IP66  |           |            |            |            |            |            |
| Impact Rating      | IK08  |           |            |            |            |            |            |
| PF                 | >0.95   |           |            |            |            |            |            |
| CRI                | R <sub>a</sub> >70  |           |            |            |            |            |            |
| Beam Angle         | Type-I (short)   Type II (medium)   Type III (medium)   Type V (medium)                             |           |            |            |            |            |            |
| Life span          | >75,000 Hours   |           |            |            |            |            |            |
| Housing            | <b>Housing</b> : Die-cast aluminium / <b>Heat sink</b> : Anodized aluminium alloy / <b>Lens</b> :PC |           |            |            |            |            |            |
| Dimension          | L: 431mm  | L: 504mm  | L: 577mm   | L: 650mm   | L: 723mm   | L: 796mm   | L: 869mm   |
| Weight             | 5.3kg   | 6.1kg     | 7.3kg      | 8.2kg      | 9.0kg      | 9.9kg      | 10.8kg     |
| Warranty           | 5 Years   |           |            |            |            |            |            |

## DIMENSIONS



## ACCESSORIES

Adjustable Adapter 60-60mm



Wall Mounting Bracket



Adapter 60-80mm | 60-40mm



Daylight Sensor



# CONVEYOR LIGHTS



## KESTREL SERIES

**5**  
YEARS  
WARRANTY

**67**  
IP RATING

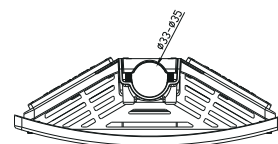
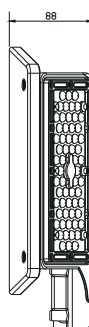
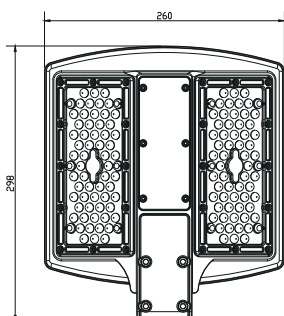
**>80**  
CRI

  
LIFE SPAN  
MORE THAN  
50,000 Hrs



- » Suitable for industrial and commercial application
- » IP67 Water and dust proof,
- » Better heat dissipation & longer LED Life span
- » Do not require warm up and Flicker Free
- » Life span of more than 50,000 hours

| MODEL                     | ETG-KCL100                    |
|---------------------------|-------------------------------|
| Light Source              | Philips                       |
| LED Quantity              | 120 Pcs                       |
| System Efficacy           | 130LM (CCT 5000K)             |
| Luminous Flux             | 10,400lm (CCT 5000K)          |
| Beam Angle                | 30°, 60°, 90°, 120°, 85x 135° |
| CRI                       | >70Ra / >80Ra                 |
| System Efficient          | >0.90                         |
| IP Rating                 | IP67                          |
| Operating Temp            | -30° to +45°C                 |
| LED Driver                | Meanwell                      |
| Power (W)                 | 100W                          |
| Input Voltage             | 90- 305V(HLG /ELG)            |
| Output Voltage            | 36V +/- 1.0%                  |
| Output Current            | 3.0A                          |
| Power Efficiency          | >93%                          |
| THD                       | <15%                          |
| Junction Temperature (Tj) | <75° C                        |





# CANOPY LIGHTS



# ECO TRIDENT SERIES

**5** YEARS WARRANTY  
**20** IP RATING  
**>80** CRI  
 LIFE SPAN MORE THAN 50,000 Hrs

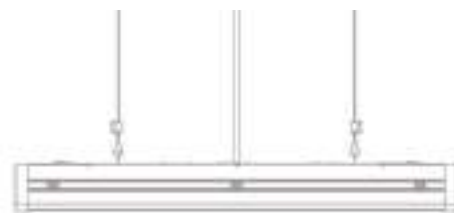
- » Over 50% energy saving compared to conventional fluorescent lights
- » Ideal for surface mounted or suspended lighting application
- » Light weight made easy to mount on any kind of ceiling surface



|                       |                  |
|-----------------------|------------------|
| MODEL                 | ETG-ETS1200      |
| Power                 | 40W              |
| Light Source          | SMD2835          |
| CCT(K)                | 5000K/6000K      |
| AC Input              | 220-240V 50/60Hz |
| Operating Temperature | -20o ~ +40oC     |
| Efficacy              | 90~100lm/w       |
| Power Factor          | ≥0.93            |
| Lumen (frost)         | 4000lm           |
| IP Rating             | IP20             |
| CRI                   | 80               |
| Beam Angle            | 120°             |
| Dimming               | No               |
| Body Color            | White            |
| Warranty              | 5 Years          |



Surface mounted



Suspended mounted

# ZEUS SERIES

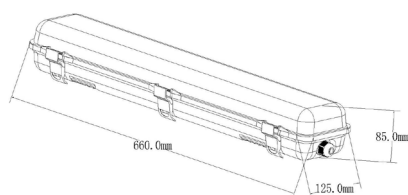
**5** YEARS WARRANTY  
**65** IP RATING  
**>80** CRI  
 LIFE SPAN MORE THAN 50,000 Hrs



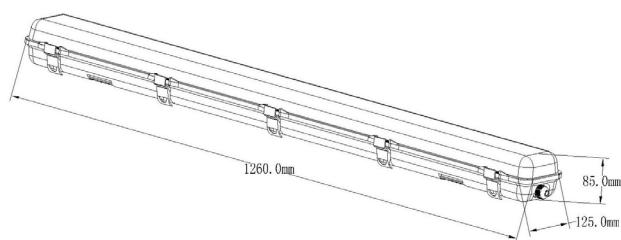
- » Patent and functional design with imaginative appearance
- » Stainless /Plastic clip
- » V0 rating of fireproof
- » Maximum efficacy and minimum glare
- » High luminous efficacy and High CRI Reaching 120lm/W
- » No UV ,No lead, No Mercury



| MODEL                 | ETG-ZLB060-CW          | ETG-ZLB12-CW            |
|-----------------------|------------------------|-------------------------|
| Power(W)              | 24                     | 48                      |
| LED Light Source      | 2835 0.5w              | 2835 0.5w               |
| LED Qty               | 56 pcs                 | 112 pcs                 |
| Dimension             | 600 x 125 x 85 (LxWxH) | 1260 x 130 x 97 (LxWxH) |
| Lumens                | 2400                   | 4800                    |
| AC Input              | 220-240Vac             |                         |
| Operating Temperature | -15°C ~ 45°C           |                         |
| IP Grade              | IP65                   |                         |
| Power Factor          | >0.95                  |                         |
| PROTECTION            | CLASS-III              |                         |
| CRI                   | >80                    |                         |
| Beam Angle            | 120°                   |                         |
| Life span             | >30000                 |                         |
| Warranty              | 5 Years                |                         |



ETG-ZLB60-CW



ETG-ZLB12-CW

# SKY SERIES

**3**  
YEARS  
WARRANTY

**44**  
IP RATING

**>80**  
CRI

  
LIFE SPAN  
MORE THAN  
50,000 Hrs

- » 36W LED replaces a 72W fluorescent fitting
- » Single end power anti electric shock ensures safety
- » Maximum efficacy and minimum glare
- » Thin and less weight
- » Lasts for over 50,000 hours



**ETG-SPL3060**



**ETG-SPL6060**



**ETG-SPL12060**



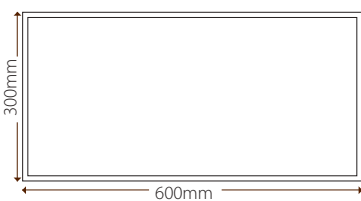
**ETG-SPL12030**



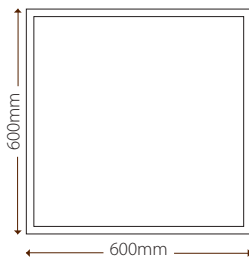
# SKY SERIES

| MODEL             | ETG-SPL6030                    | ETG-SPL6060          | ETG-SPL12030         | ETG-SPL12060         |
|-------------------|--------------------------------|----------------------|----------------------|----------------------|
| Size              | 600 x 300 x 9 (mm)             | 600 x 600 x 9 (mm)   | 1200 x 300 x 9 (mm)  | 1200 x 600 x 9 (mm)  |
| Power             | 24W                            | 40W                  | 40W                  | 72W                  |
| Lumen (lm)        | 2640 lm                        | 4400 lm              | 4400 lm              | 6480 lm              |
| Replaces          | T8 Fluorescent 2X18W           | T8 Fluorescent 3X18W | T8 Fluorescent 2X36W | T8 Fluorescent 4X36W |
| Frame Color       | White                          |                      |                      |                      |
| Approvals         | SAA/C-tick, RoHS, CE           |                      |                      |                      |
| IP Rating         | IP44                           |                      |                      |                      |
| Voltage           | AC 90-277V                     |                      |                      |                      |
| Power factor      | >0.9                           |                      |                      |                      |
| Luminous Efficacy | 110 lm/W                       |                      |                      |                      |
| LED Color Temp    | 4000K, 5000K, 6000K            |                      |                      |                      |
| Beam Angle        | 180°                           |                      |                      |                      |
| Life span         | 50,000 Hrs                     |                      |                      |                      |
| Connection        | 1.2m Power Cable with SAA Plug |                      |                      |                      |
| Warranty          | 3 Years                        |                      |                      |                      |

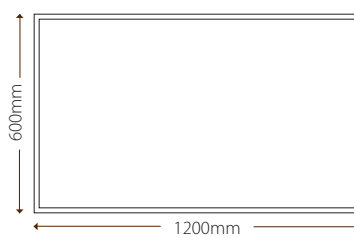
**ETG-SPL6030**



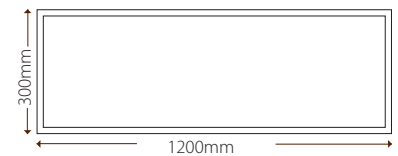
**ETG-SPL6060**



**ETG-SPL12060**



**ETG-SPL12030**



UNIBODY SURFACE MOUNTED FRAME



ASSEMBLED SURFACE MOUNTED FRAME



RECESSED MOUNTED FRAME



SUSPENSION MOUNTED KIT



# SPARK SERIES

**5**  
YEARS  
WARRANTY

**20**  
IP RATING

**>80**  
CRI

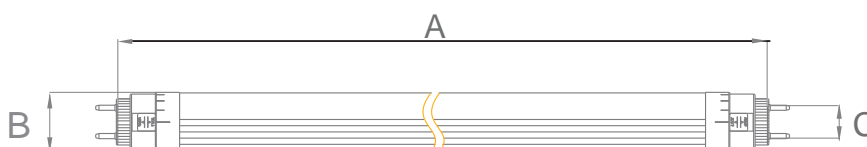
LIFE SPAN  
MORE THAN  
50,000 Hrs



- » Patented 180° rotating end cap design for the best lighting
- » Single end power anti electric shock ensures safety
- » Maximum efficacy and minimum glare
- » High-tech optical design
- » Life span of more than 50,000 hours



| MODEL                 | ETG-ST8/600MM    | ETG-ST8/900MM  | ETG-ST8/1200MM  | ETG-ST8/1500MM  |
|-----------------------|------------------|----------------|-----------------|-----------------|
| Power(W)              | 11               | 17             | 20              | 24              |
| Lumens (Clear) [Lm]   | 1760             | 2720           | 3200            | 3840            |
| Lumens (Frosted) [Lm] | 1650             | 2550           | 3000            | 3600            |
| LED Qty               | 56               | 84             | 112             | 168             |
| Dimension (AxBxC)     | 588 x 26 x G13   | 894 x 26 x G13 | 1198 x 26 x G13 | 1498 x 26 x G13 |
| Light Source          | 2835             |                |                 |                 |
| CCT(K)                | 6500K            |                |                 |                 |
| AC Input              | 100-277V 50/60Hz |                |                 |                 |
| Operating Temperature | -20 ~ +40°C      |                |                 |                 |
| Power Efficiency      | ≥0.90            |                |                 |                 |
| Power Factor          | ≥0.90            |                |                 |                 |
| THD                   | <20%             |                |                 |                 |
| Water & Shock Proof   | IP20             |                |                 |                 |
| CRI                   | >80              |                |                 |                 |
| Beam Angle            | 120°             |                |                 |                 |
| Installation Height   | 3 - 8 Meter      |                |                 |                 |
| Warranty              | 5 Years          |                |                 |                 |



# FORTE SERIES

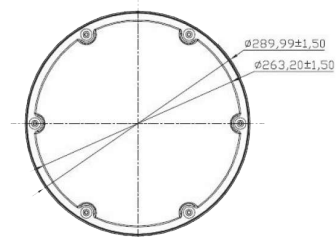
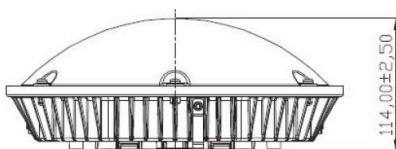
**5** YEARS WARRANTY  
**54** IP RATING  
**>80** CRI  
 LIFE SPAN MORE THAN 50,000 Hrs



- » ADC12 Aluminium heat-sink
- » Integrated occupancy sensor
- » Upto 135 lm/w Lamp efficacy
- » 5 Years warranty



| MODEL                  | ETG-FFL40                   | ETG-FFL60 |
|------------------------|-----------------------------|-----------|
| Power                  | 40W                         | 60W       |
| Lumen (lm)             | 5400 lm                     | 8100 lm   |
| Input Voltage          | AC100-277V                  |           |
| IP Rating              | IP54                        |           |
| LED Type / Pcs         | Nichia 757G-V1              |           |
| CRI                    | Ra80                        |           |
| Power Factor           | >0.9                        |           |
| CCT Range              | 3000K~6500K                 |           |
| Dimmable               | 1-10V                       |           |
| View Angle             | 160°                        |           |
| Sensor Type (optional) | Integrated Microwave Sensor |           |
| Driver                 | Built-in                    |           |
| Diameter (inside/edge) | 263.20 / 289.99 mm          |           |
| Working Temperature    | -20° ~ 40°                  |           |
| Body                   | ADC12 Aluminum heat-sink    |           |
| Weight                 | 3.2KG                       |           |
| Warranty               | 5 years                     |           |



# CANOPY LIGHT

SURFACE MOUNT

**5**  
YEARS  
WARRANTY

**65**  
IP RATING

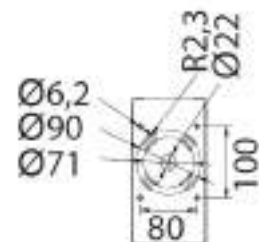
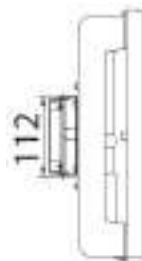
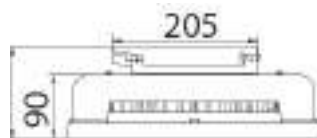
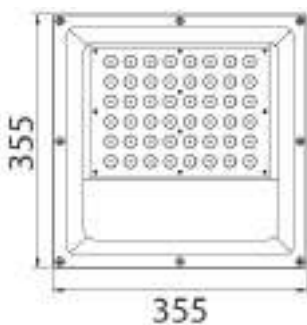
**>70**  
CRI

LIFE SPAN  
MORE THAN  
50,000 Hrs



- High output Cree XTE LED Chip
- Meanwell Driver
- 50,000 hours life to L70
- 50% energy savings over traditional fittings
- 5 Years warranty

| MODEL             | ETG-CLSM100                         | ETG-CLSM150 |
|-------------------|-------------------------------------|-------------|
| Rated Power       | 100W                                | 150W        |
| Lumen (lm)        | 11,000                              | 16,500      |
| Rated Voltage     | 100 - 227Vac 50/60Hz                |             |
| Luminous Efficacy | 110 lm/w                            |             |
| Power Factor      | >0.95                               |             |
| CRI (Ra)          | Ra≥70                               |             |
| Rating            | IP65                                |             |
| CCT               | 4000K (Standard)   6000K (Optional) |             |
| LED Chip          | Cree XTE LED Chip                   |             |
| Driver            | Meanwell ELG                        |             |
| Connection        | 0.2M Flex                           |             |
| Housing Material  | Aluminium body + Toughened Glass    |             |
| Size              | 420 x 420 x 91                      |             |
| Beam Angle        | 120°                                |             |
| Life span         | 50,000 hrs                          |             |
| Warranty          | 5 Years                             |             |



# CANOPY LIGHT

RECESSED MOUNT

**5** YEARS WARRANTY

**65** IP RATING

**>70** CRI

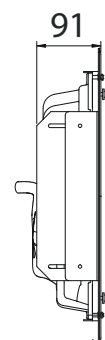
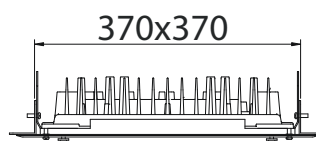
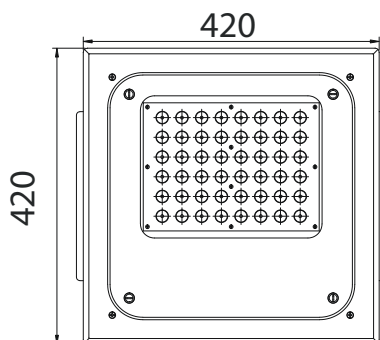
LIFE SPAN MORE THAN 50,000 Hrs



- High output Cree XTE LED Chip
- Mean Well Driver
- 50,000 hours life to L70
- 50% energy savings over traditional fittings
- 5 Years warranty



| MODEL             | ETG-CLRM100                         | ETG-CLRM150 |
|-------------------|-------------------------------------|-------------|
| Rated Power       | 100W                                | 150W        |
| Lumen (lm)        | 11,000                              | 16,500      |
| Rated Voltage     | 100 - 227Vac 50/60Hz                |             |
| Luminous Efficacy | 110 lm/w                            |             |
| Power Factor      | >0.95                               |             |
| CRI (Ra)          | Ra≥70                               |             |
| Rating            | IP65                                |             |
| CCT               | 4000K (Standard)   6000K (Optional) |             |
| LED Chip          | Cree XTE LED Chip                   |             |
| Driver            | Meanwell ELG                        |             |
| Connection        | 0.2M Flex                           |             |
| Housing Material  | Aluminium body + Toughened Glass    |             |
| Size              | 420 x 420 x 91                      |             |
| Beam Angle        | 120°                                |             |
| Life span         | 50,000 hrs                          |             |
| Warranty          | 5 Years                             |             |



# CANOPY LIGHT

## SURFACE MOUNT

**5**  
YEARS  
WARRANTY

**65**  
IP RATING

**>80**  
CRI



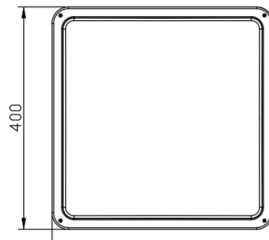
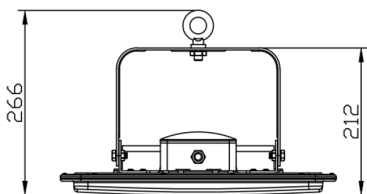
LIFE SPAN  
MORE THAN  
50,000 Hrs

- » High output Cree XTE LED Chip
- » Meanwell Driver
- » 50,000 hours life to L70
- » 50% energy savings over traditional fittings
- » Optional kit for Recessed and Surface mount
- » 5 Years warranty



| MODEL       | ETG-CLRMB100 | ETG-CLRMB150 | ETG-CLRMB200 |
|-------------|--------------|--------------|--------------|
| Rated Power | 100W         | 150W         | 200W         |
| Lumen (lm)  | 13,000       | 19,500       | 26,000       |
| LED Qty     | 182          | 231          | 329          |

|                   |  |                     |                |
|-------------------|--|---------------------|----------------|
| Rated Voltage     | 90 ~ 305Vac   47 ~63Hz                   | Driver              | Meanwell       |
| Luminous Efficacy | 130 lm/w                                 | Working Temperature | -40°C~+60°C    |
| Power Factor      | 0.94                                     | Housing Material    | Aluminium body |
| CRI (Ra)          | Ra80                                     | Size                | 420 x 420 x 91 |
| IP Rating         | IP65                                     | Beam Angle          | 120°           |
| CCT               | 2800K-3200K / 4000 - 4500K / 5500K-6500K | Life span           | 50,000 hrs     |
| LED Chip          | SMD 3030                                 | Warranty            | 5 Years        |



### MOUNTING OPTIONS



**SURFACE MOUNT**



**RECESSED MOUNT**



**"U"BRACKET MOUNT**



**HANG MOUNT**





# DOWN LIGHTS





# OPAL SERIES

**5**  
YEARS  
WARRANTY

**20**  
IP RATING

**>80**  
CRI

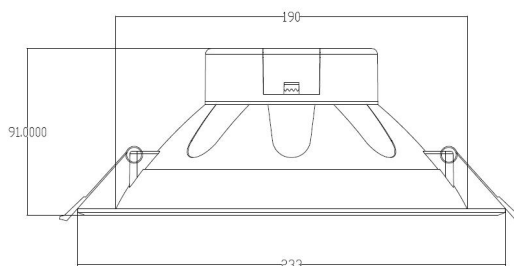
LIFE SPAN  
MORE THAN  
25,000 Hrs



- » Built in drive with 1.2m flex & plug.
- » Poly cover aluminum body, good heat dissipation
- » Diameter 233mm, cutout size 190mm
- » Smooth dimming with Clipsal and HPM trailing edge



| MODEL                 | ETG-ODL25                                    |
|-----------------------|--|
| Rated Power           | 25W  |
| IP Rating             | IP20   |
| Lumen (lm)            | 2600lm (natural light)   2400lm (warm light) |
| Voltage               | AC220-240V                                   |
| Color Temperature     | 2700K   3000K   4000K   5000K                |
| Body                  | Heat-conductive plastic + Aluminum           |
| CRI                   | Ra80   |
| LED Chip & Type       | 2835 SMD LED                                 |
| Operating Temperature | -5°C~ 35°C                                   |
| Beam Angle            | 90°  |
| Net Weight            | 495g   |
| Dimension (mm)        | Φ233 x 91mm                                  |
| Cut-out (mm)          | Φ195-210mm                                   |
| Dimmable              | No   |
| Life span             | 25,000 hrs                                   |
| Warranty              | 5 Years                                      |



# OPAL SERIES

**5**  
YEARS  
WARRANTY

**44**  
IP RATING

**>80**  
CRI

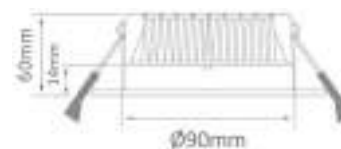
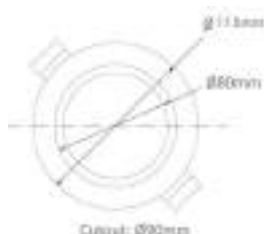
LIFE SPAN  
MORE THAN  
50,000 Hrs



- Built in drive with 1.2m flex & plug.
- Poly cover aluminum body, good heat dissipation
- Diameter 115mm, cutout size 90mm
- Smooth dimming with Clipsal and HPM trailing edge
- CCT Changeable 3000K, 4000K & 6000K
- Long life span up-to 50,000 hours
- ✳ Optional clip-on metal ring



| MODEL                 | ETG-ODL10CCT          |
|-----------------------|-----------------------|
| Rated Power           | 10W                   |
| IP Rating             | IP44                  |
| Lumen (lm)            | 900                   |
| Voltage               | AC220-265V            |
| Color Temperature     | 3000K / 4000K / 6000K |
| CRI (Ra)              | >80                   |
| LED Chip & Type       | 2835 SMD LED          |
| LED Qty               | 24pcs                 |
| Operating Temperature | -25°C~ 45°C           |
| Beam Angle            | 100°                  |
| Diameter              | 115mm                 |
| Height                | 60mm                  |
| Cut-out               | 90mm                  |
| Dimmable              | Yes                   |
| Life span             | 50,000 hrs            |
| Warranty              | 5 Years               |



# PROJECTION LIGHTS



## WALL WASHER SERIES

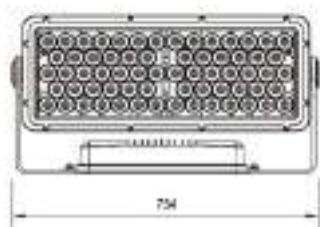
**5** YEARS WARRANTY  
**66** IP RATING  
**10** IK RATING  
**>80** CRI



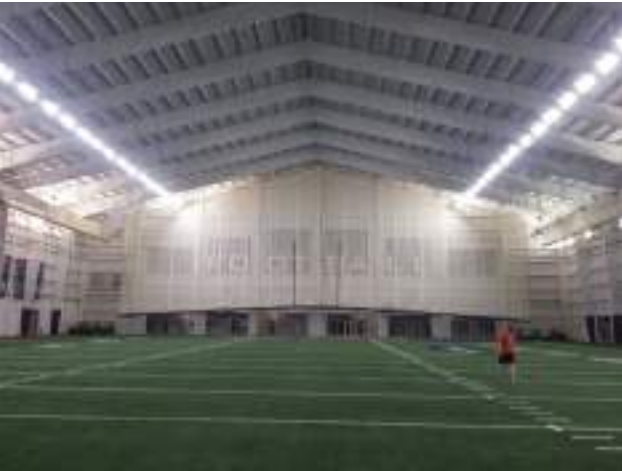
- » Ultra narrow light beam angle of 4.5 degree
- » Single light distance reach up to 200 meters
- » Aluminium alloy body and high heat dissipation
- » Low weight design
- » Intelligent logarithmic dimming technology



| MODEL                      | ETG-WWPL150             |
|----------------------------|-------------------------|
| Rated Power                | 158W                    |
| IP Rating                  | IP66 / IK10 impact lens |
| Lumen (lm)                 | 11227/6257 lm           |
| LED Pcs                    | 66pcs                   |
| Color                      | Single / 18R18G18B12W   |
| Input Voltage              | AC100-277V              |
| Frequency Range            | 50 / 60 Hz              |
| Control Mode               | CC / DMX512             |
| Beam Angle                 | 4.5°/10°/25°/40°/60°    |
| Working Temperature        | -35° ~ 50°              |
| Humidity Working Condition | 10-90%                  |
| LED Lifetime               | 70,000h                 |
| Body                       | Aluminium alloy         |
| Net Weight                 | 14.2kg / 16.5kg         |
| Gross Weight               | 16.1kg / 18.04kg        |
| Packaging size             | 790x450x310mm RGB       |
|                            | 790x450x200mm Single    |
| Warranty                   | 5 years                 |



# CASE STUDIES



# notes.

---

---

---

---

---

---

---

---

---

---

---

---

---

---

---

---

---

---

---

---

---

---

---

---

[www.etms.com.au](http://www.etms.com.au) | [sales@etms.com.au](mailto:sales@etms.com.au) | 1300 410 485

-  LIKE US  
**earthtrack**
-  CONNECT WITH US  
**Earthtrack Group**
-  FOLLOW US  
**@earthtrack\_AU**
-  FOLLOW US  
**@earthtrackgroup**





**Earthtrack Group Pty Ltd**

[www.etms.com.au](http://www.etms.com.au) | [www.earthtrackgroup.com.au](http://www.earthtrackgroup.com.au)


1300 410 485 | [Sales@etms.com.au](mailto:Sales@etms.com.au)

34 Remisko Drive, Forrestdale, WA 6112

 earthtrack

 earthtrack group

 earthtrackgroup

 earthtrack\_AU